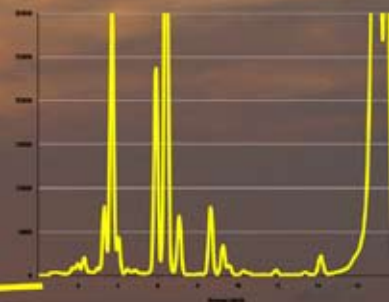




# TXRF 2009 Göteborg Sweden



Second announcement

## TXRF 2009 Conference June 15-19 2009, Gothenburg, Sweden

The 13th conference on  
Total Reflection X-Ray Fluorescence Analysis and Related Methods

Organised by University of Gothenburg  
In co-operation with IAEA  
with the support of EXSA, Bruker and Rigaku.



UNIVERSITY OF  
GOTHENBURG



EXSA



Rigaku

## Scope of the conference

**The TXRF 2009 conference will be held in the Wallenberg conference center, University of Gothenburg, Gothenburg, Sweden, June 15-19, 2009.**

The aim of the conference is for experts and users of Total Reflection X-ray Fluorescence (TXRF) and related techniques to meet, present and discuss recent advances, research results, novel fields of applications and future directions in the field of TXRF. The conference covers many aspects and applications of TXRF analysis: medical, biological and environmental applications as well as industrial investigations; surface analyses for contamination control and process checking; instrumental and method development and data analysis.

The scope of the conference is not limited to TXRF, but analytical methods and techniques related to TXRF are also discussed. ReflEXAFS, X-Ray Reflectivity, Grazing Incidence X-Ray Fluorescence Analysis, Grazing Exit X-Ray Fluorescence Analysis, X-Ray Standing-wave analysis are examples of such techniques.

Researchers, academics, scientists are invited to attend the meeting and share their work, experience, results and successes but also questions and difficulties to nourish the discussion and let the whole international community profit from it.

***Welcome!***

**Johan Boman**  
Conference chair

## Organizers

University of Gothenburg  
Department of chemistry  
Kemigården 4  
Gothenburg, Sweden



UNIVERSITY OF  
GOTHENBURG

**In co-operation with**

The International Atomic  
Energy Agency



## Previous meetings

1986 Geesthacht	1998 Austin
1988 Dortmund	2000 Vienna
1990 Vienna	2002 Madeira
1992 Geesthacht	2003 Awaji
1994 Tsukuba	2005 Budapest
1996 Eindhoven and Dortmund	2007 Trento

## International Advisory Committee

H. Aiginger	(Austria)	P. Pianetta	(USA)
P. Beaven	(Germany)	A. Prange	(Germany)
M. L. Carvalho	(Portugal)	C. Streli	(Austria)
Y. Gohshi	(Japan)	K. Taniguchi	(Japan)
R. Hockett	(USA)	P. Wobruschek	(Austria)
J. Kawai	(Japan)	C. Vázquez	(Argentina)
R. Klockenkämper	(Germany)	M. A. Zaitz	(USA)
G. Pepponi	(Italy)	G. Zárny	(Hungary)

## Local organizing committee

Johan Boman	University of Gothenburg (Chair) e-mail: txrf2009@chem.gu.se
Annemarie Wagner	Chalmers University of technology (Co-chair)
Mattias Hallquist	University of Gothenburg
Jan Pettersson	University of Gothenburg
Britt Björling	University of Gothenburg
Ingrid Kubista	University of Gothenburg



## Invited speakers

**These speakers are confirmed. The list will be updated when more speakers accept the invitation.**

**Giancarlo Pepponi** – Review of GIXRF applied to the quantification of ion implants

**Alex von Bohlen** – X-ray Standing Waves – a promising tool for near surface nano analysis

**Florian Meirer** – Recent research about GI-XAS

**Shinsuke Kunimura** – Portable TXRF spectrometer with an 1 W X-ray tube for the picogram range of toxic elements

**Mary Ann Zaitz** – To be announced

## Conference venue

The conference will be held at the **Conference Center Wallenberg**, part of the University of Gothenburg. It is located close to the city center with lecture theatres fully equipped with all facilities needed for a successful conference. The foyer will be used for registration, industrial exhibition, coffee breaks and poster sessions. Lunch is served in the same building. The premises are accessible and safe for disabled people.

### Visiting address:

Medicinaregatan 20A

Telephone: +46 31 786 5959

Fax: +46 31 786 2998

### How to get there:

The trams 7, 8, 13 and rapid bus 16 stop close to the venue (Medicinaregatan).

Parking is available in a garage close to the Wallenberg conference centre.



The Conference Centre Wallenberg from above and street view

## Social program

There will be a reception on Sunday (June 14) afternoon/evening, a conference dinner on Thursday and a tour is planned for Wednesday.

## Call for papers

### Submission time extended to March 16<sup>th</sup>

Authors are invited to send their contributions (oral or poster) in the form of research abstracts. Instructions for abstract submission will soon be available on the web site of the conference.

Abstracts can be sent to [txrf2009@chem.gu.se](mailto:txrf2009@chem.gu.se) up to March 16<sup>th</sup>, 2009. Authors will be informed of the acceptance of their contribution and its presentation (oral or poster) by March 30<sup>th</sup>, 2009.

Abstracts of all accepted contributions (oral and poster) as well as the final program, will be published in the Book of Abstracts that will be distributed to all participants at the registration.

### Posters

There will be poster sessions. Maximum poster size is A0 (84 x. 121 cm). Portrait layout is preferred.

## Fees and registration

	Before April 17th, 2009	After April 17th, 2009
Regular attendee	3900 SEK	4900 SEK
Student attendee*	2000 SEK	2800 SEK
Accompanying person	1800 SEK	2400 SEK

*\*Student card required*

(10 SEK  $\approx$  1 €, 12 SEK  $\approx$  1 US\$, 9 SEK  $\approx$  100 JPY, 8 SEK  $\approx$  1 GBP. 21 November 2008)

### The regular fee includes:

- Conference materials and abstracts booklet
- Welcome reception (Sunday afternoon/evening)
- Coffee breaks
- Lunches
- Excursion
- Conference Dinner

### The accompanying fee includes:

- Welcome reception
- Excursion
- Conference Dinner

## Financial support

The International Atomic Energy Agency might be able to award a limited number of grants to participants from Member States eligible to receive technical assistance under the Technical Co-operation programme.

Applications will be collected by the conference organization: [txrf2009@chem.gu.se](mailto:txrf2009@chem.gu.se)

## Accommodation

We have selected four hotels where rooms have been reserved for you. All of them are in or close to the city center and within walking distance to the conference venue. That is, if you don't mind walking for approximately 30 minutes.

Please refer to the booking number of the hotel when booking.

### Hotel Flora

Grönsakstorget 2  
41117 Göteborg  
Telephone: +46 31 138616  
Fax: +46 31 132408  
[info@hotelflora.se](mailto:info@hotelflora.se)  
[www.hotelflora.se](http://www.hotelflora.se)

**Booking number 100377**

Double: 1 046 SEK/night.

Single: 821 SEK/night

### Quality Hotel Panorama

Eklandagatan 51+53  
40022 Göteborg  
Telephone: +46 31 7677010  
Fax: +46 31 7677071  
[q.panorama@choice.se](mailto:q.panorama@choice.se)  
[www.panorama.se](http://www.panorama.se)

**Booking number 123520**

Double: 1320 SEK/night. Single 930 SEK/night

### SGS veckobostäder

Utlandagatan 24  
41280 GÖTEBORG  
Telephone: +46 31 3336390  
Fax: +46 31 3336391  
[vb@sgsveckobostader.se](mailto:vb@sgsveckobostader.se)  
[www.sgsveckobostader.se](http://www.sgsveckobostader.se)  
Please click the icon "In English" in the upper right corner for more information

**Booking number 12602901**

Room rates available on the web site.

### Hotel Vasa

Viktoriagatan 6  
41125 Göteborg  
Telephone: +46 31 173630  
Fax: +46 31 7119597  
[info@hotelvasa.se](mailto:info@hotelvasa.se)  
[www.hotelvasa.se](http://www.hotelvasa.se)

Only double rooms available.

**Booking number 55680**

Double: 910 SEK/night

Booking should be done directly to the hotel. The pre-reserved rooms and rates are available until early May.

If help is needed do not hesitate to contact us.

Please look at [www.goteborg.com](http://www.goteborg.com) for more information about Gothenburg and more accommodation alternatives. There are alternatives ranging from youth hostels, budget hotels like Formule 1 to top class hotels like Radisson SAS Scandinavia.

## Contact us

All questions can be directed to Johan Boman.

**E-mail:** [txrf2009@chem.gu.se](mailto:txrf2009@chem.gu.se)

**Phone:** +46 31 772 32 88

**Web:** [www2.chem.gu.se/atmo/txrf2009.html](http://www2.chem.gu.se/atmo/txrf2009.html)

## Gothenburg, Sweden

Gothenburg is the largest city on the Swedish west-coast, still it has a cosy, small town atmosphere. The surrounding countryside is a midsummer night dream - thousands of small islands in a large archipelago, forests and lakes. By the end of June the sun is only down for a few hours and it never gets dark. Staying a few extra days to explore the land of the midnight sun might be a good idea.

Find more information about Gothenburg at [www.goteborg.com](http://www.goteborg.com)



## How to get to Gothenburg

Gothenburg can be reached via ferry, train, bus or plane. All trains, buses, and airport coaches arrive at the Central Station, which is basically in the centre of Gothenburg. From continental Europe it is also possible to reach Gothenburg by car.

### Ferry:

There is ferry traffic from Denmark (Fredrikshavn,) and Germany (Kiel). The port is within walking distance from the city center. For more information [www.aferry.com](http://www.aferry.com). Several trams and busses also connects the port and the city centre.

### Train:

Sweden has an excellent train service. SJ (Statens Järnvägar) is a train network connecting most of the Swedish cities and the European continent through Denmark. It is always advisable to book the tickets well in advance, the earlier the better. For more information about traveling in Sweden: [www.sj.se/sj/jsp/polopoly.jsp?d=10&l=en](http://www.sj.se/sj/jsp/polopoly.jsp?d=10&l=en). For international trains you need to contact your local train operator or travel agency.

## Plane:

### Göteborg City Airport ([www.goteborgairport.se/eng.asp](http://www.goteborgairport.se/eng.asp))

Ryan air have direct flights from several European cities: Madrid, Frankfurt, Glasgow, London, Marseille Provence, Dublin, Barcelona. ([www.ryanair.com](http://www.ryanair.com)). Germanwings fly from Cologne-Bonn ([www.germanwings.com](http://www.germanwings.com)) Wizz air fly from Warsaw and Budapest. ([www.wizzair.com](http://www.wizzair.com))

To get from and to the airport you take the "Flygbussen" ([www.flygbussarna.se/en/default.asp](http://www.flygbussarna.se/en/default.asp)). The bus costs 50 SEK and leaves the airport 50 minutes after scheduled flight arrival. The bus takes you to Nils Erikson Terminalen which is just next to the central station. When it is time to go back the buss leaves from Nils Eriksson Terminalen 2h 20 min before the scheduled flight departure. The trip takes about 30 minutes.

### Gothenburg, Landvetter airport (<http://www.lfv.se/en/Start-page/>)

Several international airlines fly to Gothenburg, Landvetter.

From Landvetter one takes the "Flygbussen" to the City centre. This buss stops at a variety of places in the town centre. This trip takes around 30 minutes and costs 70 SEK.

### Copenhagen Airport/Kastrup (<http://www.cph.dk/CPH/UK/MAIN/>)

The biggest airport close to Gothenburg is in Copenhagen. From there you can take a bus to Gothenburg, either Swebus Express ([www.swebusexpress.se](http://www.swebusexpress.se)) or Säftebussen ([www.safflebussen.se/](http://www.safflebussen.se/)) The trip takes about 4 hours and costs around 25 EUR. One tip is to by this ticket 24 hours ahead to get discount. There are direct trains as well ([www.sj.se/sj/jsp/polopoly.jsp?d=10&l=en](http://www.sj.se/sj/jsp/polopoly.jsp?d=10&l=en)) from Köpenhavns lufthavn/Kastrup to Gothenburg at approximately 60 EUR.

## By Car:

From continental Europe you can go by car and take the ferry from Puttgarden in Germany to Rödby in Denmark. Then continue through the southern part of Denmark to Copenhagen. From here you take the Öresund bridge to Malmö. From Malmö it is approximately 3-4 hours of driving on E6 the 265 km to Gothenburg.

All quoted prices are from November 2008.

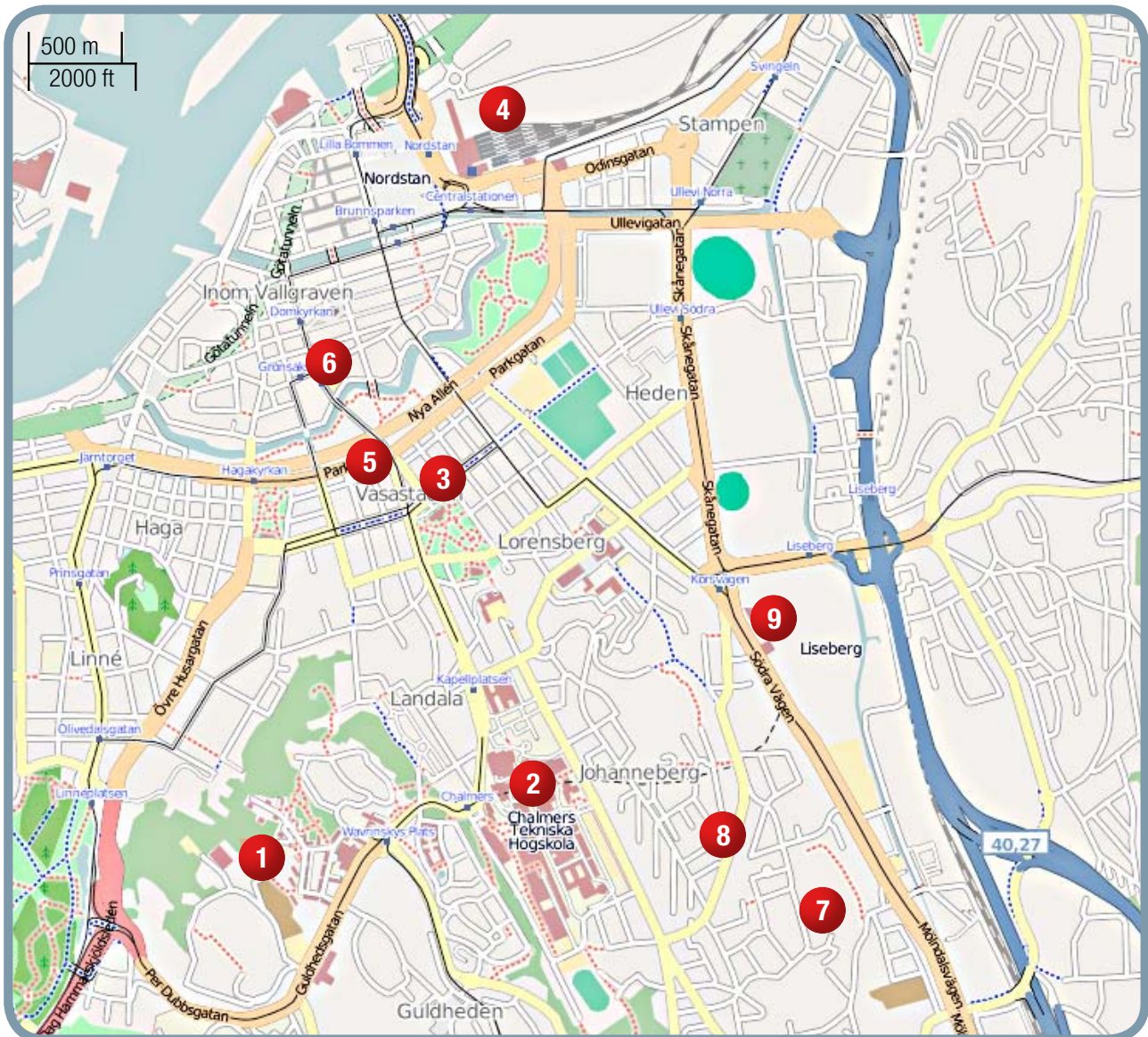
## About the University of Gothenburg

The University of Gothenburg has approximately 50 000 students (25 000 full-time students) and 5 000 employees. It is one of the major universities in Europe. With its eight faculties and approximately sixty departments, the University of Gothenburg is also the most wide-ranging and versatile university in Sweden, offering unique opportunities for cooperation and development.

The distinctive characteristic of university education at the University of Gothenburg is the close interaction between teaching and research. Students are kept informed of the latest developments in the field they are studying and researchers gain inspiration from their students expectations and needs. At the University of Gothenburg research and teaching are regarded as equally important, and there is ongoing pedagogical development work.

In an international perspective too, the University of Gothenburg is unusually comprehensive, with cutting-edge research in a number of dynamic research areas. Cooperation with Chalmers University of Technology, Sahlgrenska University Hospital, society at large and trade and industry has been consistently strengthened and intensified over recent years, as have international contacts and collaborative projects with partners abroad.

## Map over Gothenburg



1. The Conference Centre Wallenberg
2. Department of Chemistry
3. University of Gothenburg
4. Central Station
5. Hotel Vasa
6. Hotel Flora
7. SGS Veckobostäder
8. Quality Hotel Panorama
9. Universeum

For more detailed maps visit:

- [www.openstreetmap.org](http://www.openstreetmap.org)
- [www.se.map24.com](http://www.se.map24.com)